



**GREENFIELD**  
LOUISIANA, LLC

# HISTORIC AND CULTURAL RESOURCES

## STUDY OVERVIEW

*Greenfield is working with the Louisiana State Historic Preservation Office, cultural resource specialists at the U.S. Army Corps of Engineers, and other stakeholders to ensure that potential impacts from the project on historic and cultural resources are properly assessed. This review of historic and cultural properties is being conducted in accordance with the National Historic Preservation Act.*

### HISTORIC AND CULTURAL PRESERVATION

The Greenfield team has had a focus on historic and cultural preservation since the project's early inception, and initial research design was submitted to the Louisiana State Historic Preservation Office in August 2020 and approved.

### ARCHAEOLOGICAL RESOURCES

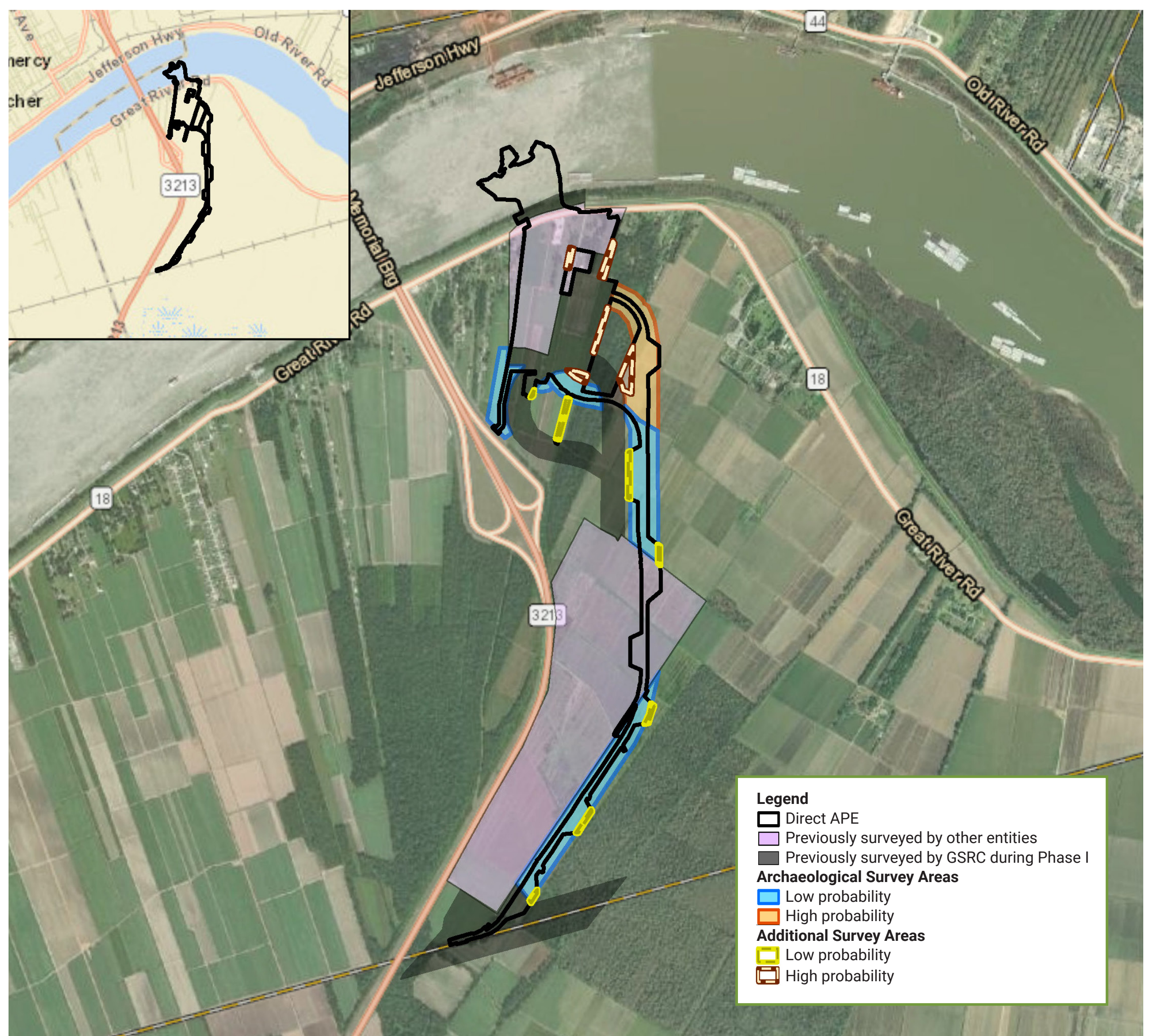
Greenfield has worked with archaeological experts to determine if cultural resources were likely to be found or disturbed during construction. These experts used existing studies that are part of state records and conducted additional studies throughout the areas that will be impacted by construction.

### SURROUNDING AND BUILT HISTORIC RESOURCES

Experts surveyed historic properties, including buildings, within 1.5 miles of the project site.

#### Greenfield's Completed Studies and Investigations

<b>2020</b>	Phase I study of the original layout for the project
<b>2021</b>	Phase I study of a revised layout for the project
<b>2022</b>	Revised Phase I Cultural Resource Investigation including additional construction areas and an expanded indirect analysis





# IDENTIFICATION OF NEARBY RESOURCES

## NATIONAL REGISTER HISTORIC DISTRICTS

**Whitney Plantation** is a National Register Historic District. A historic district is a concentration of historic buildings, structures, sites, and/or objects united historically or aesthetically by plan or physical development. Individually, the properties or resources in a historic district may not have particular historical, architectural, engineering, or archaeological distinction, but the collection must have significance in one of these areas.

**Colonial Sugars**, located across the Mississippi River, is also a National Register Historic District.



Photo credit: Mike Greenberg



Photo credit: Whitney Plantation



Photo credit: Elsa Hahne

Whitney Plantation



Photo credit: Whitney Plantation



Photo credit: Clément Bardot



Photo credit: John Cummings

Evergreen Plantation

## NATIONAL HISTORIC LANDMARK

**Evergreen Plantation** is a National Historic Landmark. Overseen by the National Parks Service, National Historic Landmarks are historic properties that illustrate the heritage of the U.S. These could include historic buildings, sites, structures, objects, and districts. National Historic Landmarks are classified as such because they have been determined to represent an outstanding aspect of American history and culture.

## OTHER NEARBY HISTORIC RESOURCES

- Willow Grove Cemetery
- Local River Road Historic District: Towns of Edgard, Lucy, and Wallace
- River Road Cultural District



# ANALYSIS OF POTENTIAL EFFECTS

**The Greenfield team is currently going through the consultation process required under Section 106 of the National Historic Preservation Act with the U.S. Army Corps of Engineers and several vested consulting parties.**

The historic and cultural resource assessment evaluates whether visual, atmospheric, or audible features of the project will impact surrounding historic resources. Greenfield's team conducted a detailed visual impact assessment as part of the historic and cultural

resource assessment work to evaluate potential effects from the project to historic resources, including the Whitney Plantation and the Evergreen Plantation. This included using Geographic Information Systems (GIS) and Light Detection and Ranging (LIDAR) technology to create a scaled rendering of whether the proposed facility will be visible, and what it would look like from various viewpoints.

The project has been designed to avoid and minimize impacts to historic properties, such as by re-designing

the facility to reduce overall height and incorporate trees and shrubs as visual screening. We believe the visual impact assessment demonstrates that while parts of the proposed project will be visible from portions of the Whitney and Evergreen Plantations, the overall impact of the proposed project will be minimal due to existing visual barriers.

***Greenfield is also prepared to consider mitigation measures to ensure minimal impact to the community.***



*Project rendering: Whitney Plantation northwest corner, viewing west toward the Wallace Grain Export Facility*